

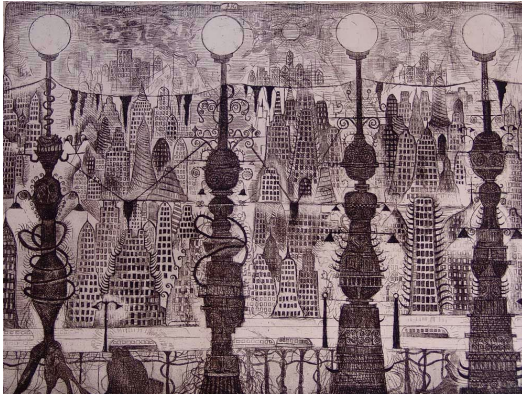
Flat File 3-4
John A. Knudsen



Dark Afternoon, Etching, 18 x 24", E 50/50 2010, JAK118

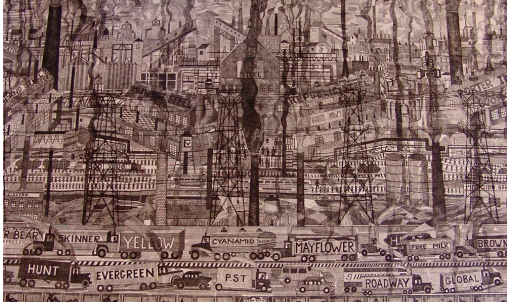


Lake Street II, Etching, 18 x 24", E 5,6/50 2010, A.P. 5/50 1984, 9,10/50 1982, JAK123



Four Lampposts, Etching, 18 x 24", E 5/50 2010, 11/50 1995, 6/50 '81, JAK447

Flat File 3-4
John A. Knudsen



Steel City, Etching, 24 x 39", E 5 editions (damaged), A.P., 5/100, 13/20,
15,16,17,20,22,23,24,25/50 1995 ag

A.P. 17/50 2006

1 edition, 5/100 2004

JAK113