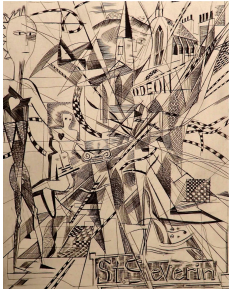


Flat File 11 - 12
John A. Knudsen



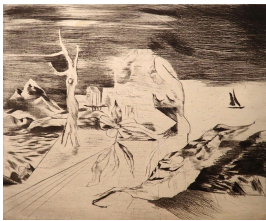
Yellow Moon, Etching, 12 x 15", E A.P., '72, JAK573



Momento, Engraving, 9 x 12", E 5 editions (Bill Hayter likes this one)
1,2,3,4,6,7,8,10,11,13,14,16,17, 19,20, 21,22,23,24,25/25, na '74 (Engraved at Atelier 17)
JAK803



P.L. on the Red Arrow, Etching, 6 x 8", E A.P., 2-7,9,10,12-15/15 '96, JAK365

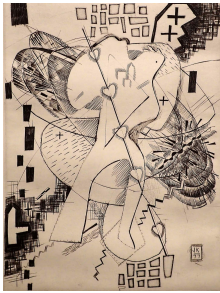


Metamorphosis, Etching, 10 x 12", E 6 editions 1962 JAK804



Rue Edgar Quimet, Etching, 8 x 8", E 2 editions 1974 JAK805

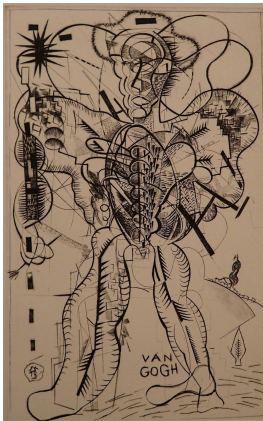
Flat File 11 - 12
John A. Knudsen



St. Valentine, Engraving, 10 x 13", E 2 editions, 1,2,3,5-9/10, 10/10 '77 JAK806



Performers, Engraving, 9 x 13" E 2,3,5,7-11,12-16/20 '75 JAK807

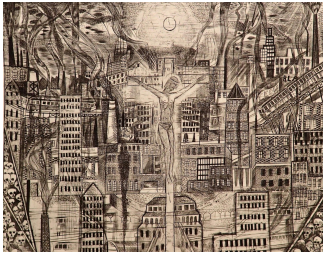


Van Gogh at Arles, Engraving, 16 x 10", E 2 A.P.s, 2 nas, 1-19/100 '78, E na 2/15 '78 (all watermarked) JAK808

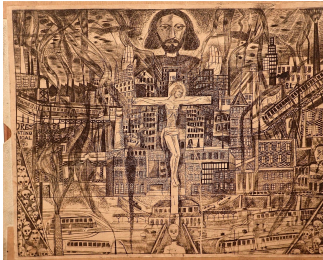
Flat File 11 - 12
John A. Knudsen



Force from within, Engraving, 10 x 14" E 1, 4, 8-12, 14,15/15 '76 JAK809



Crucifix and City, Engraving, 12 x 9", E 5/100 '74, E 2,4,6,7,12-20/20 '74, E na '92 JAK810



Crucifix and City (state), with copper plate enclosed from JAK810